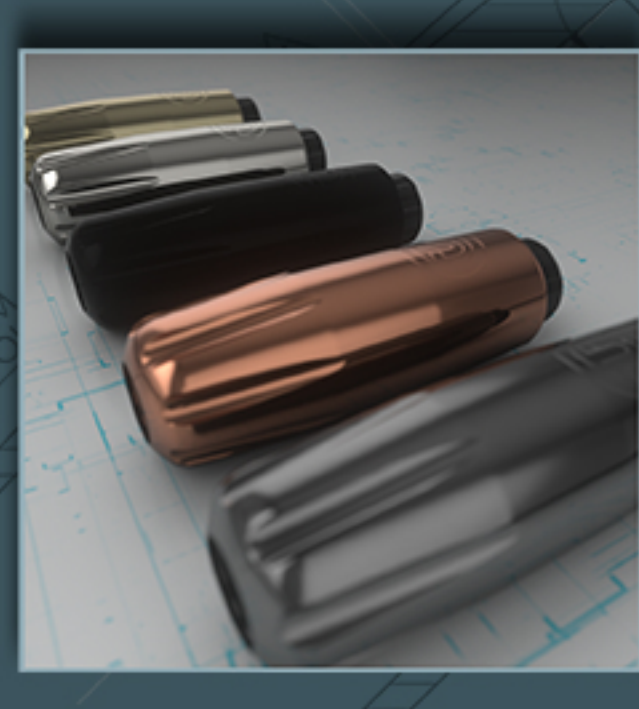




neuma4

PRODUCT INFORMATION

INNOVATE. CREATE. EMPOWER.



INTERCHANGEABLE CAMS ALLOW FOR MULTIPLE STROKE AND PROFILE VARIATIONS



Stroke Profile

Q: What is it?
A: Stroke Profile is the way we describe the amount of time a needle spends in any given position of a single stroke cycle.

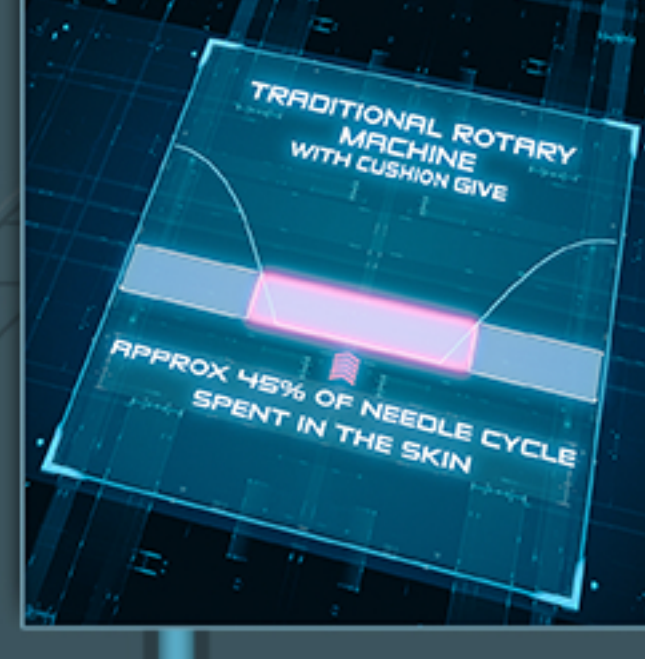
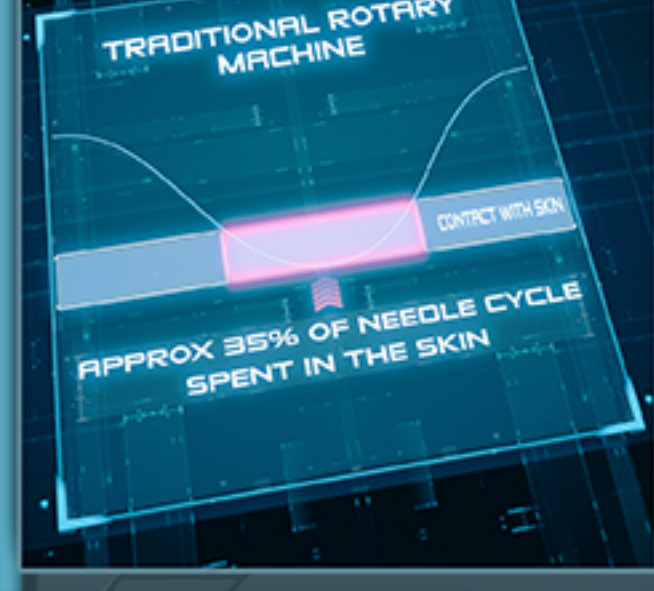
Q: Why is Stroke Profile relevant to tattooing?
A: Knowing how much time the tattoo needle spends in each position during a single stroke cycle can help to better understand what is happening to the skin during a tattoo, and with that knowledge the best possible Stroke Profile can be selected for the desired outcome.

Q: When is each Stroke Profile appropriate?
A: While this variable can be affected by more than one factor, it can be simplified down to hand speed. When the hand is moving quickly across the skin (for example when lining), it is best that the needle is retracted quickly. When the hand is moving slowly (for example when packing solid color), it can be helpful for the needle to enter and retract from the skin more slowly.

Stroke Profile

NEUMA 4 WITH .20 CAM

APPROX 20% OF NEEDLE CYCLE SPENT IN THE SKIN



Modular Design

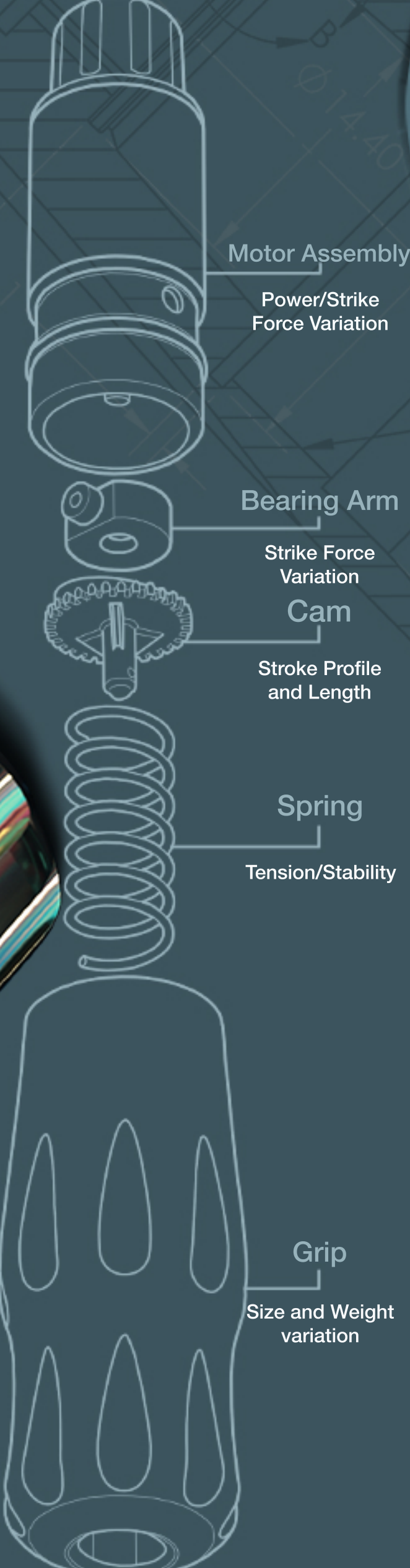
Weight Variations (grams):
115, 145, 170, 190, 205, 270,
295, 345, 370

Grip Size Variations (mm): 27, 33, 38

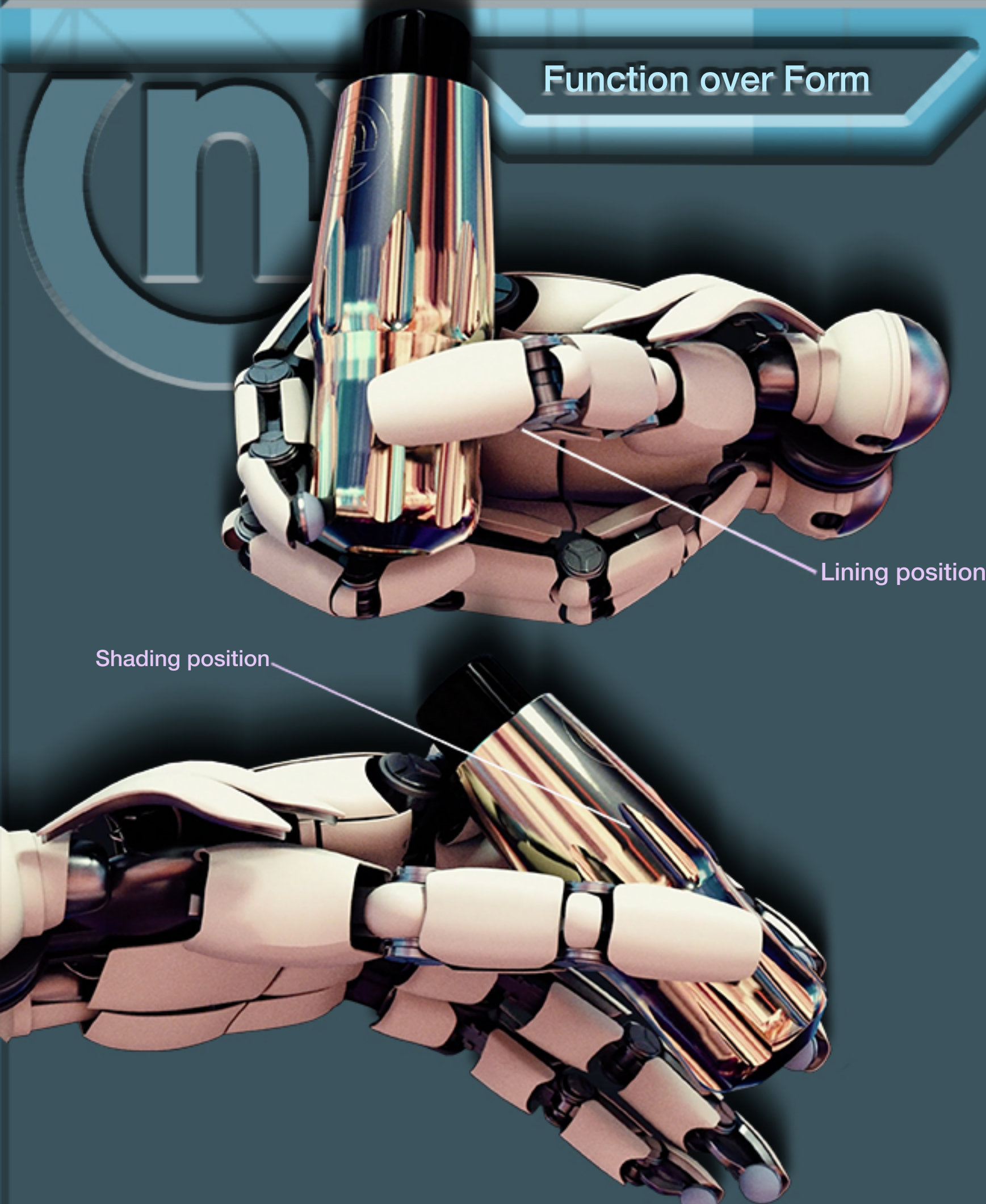
Strike Force Variations (flywheel):
Aluminum (1g), Brass (5g)

Stroke Length Variations (mm):
2.75, 3.6, 4.2

Stroke Profile Variations:
20%, 28%, 33%, 40%



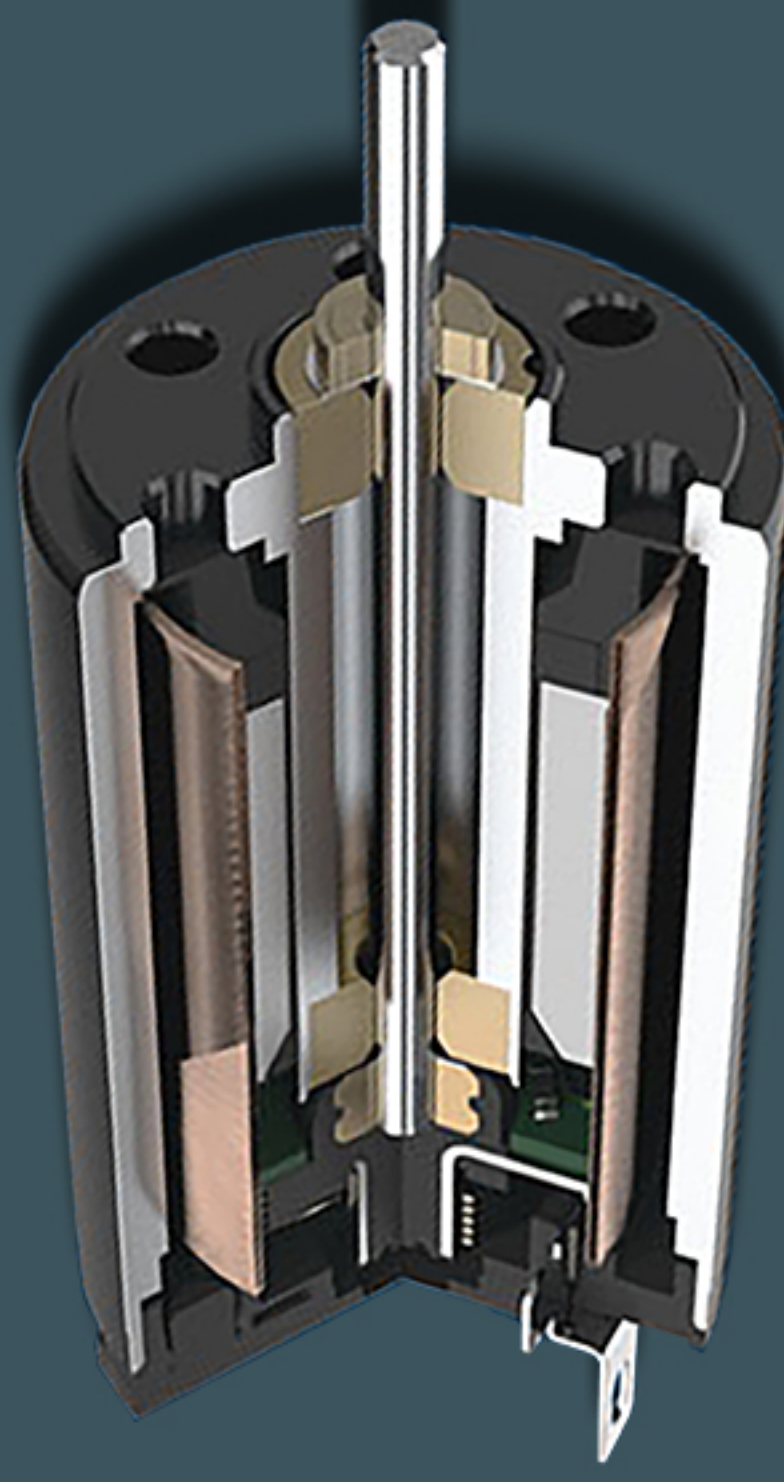
Function over Form



In some cases, form has a function. Such is the case with Neuma Grips. We put a lot of thought into the shape and size of the different grips we offer. We also realize that weight plays an important role in the craft. At times, a lighter weight is preferred while other conditions may require a heavier machine. Neuma 4 has numerous weight options to accommodate a wide variety of artists.

Neuma tattoo machines are built around custom made German-engineered motors chosen for their superior performance. These motors are ideal for use in battery operated applications where current is at a premium.

DC Motors



Neuma Vision

Carson Hill has been tattooing professionally for over 25 years, and is the founder and creator of Neuma Tattoo Machines.

His foundational training was in 1998, before the rotary machine had been embraced by the tattoo community. This resulted in designing Neuma Tattoo Machines such that they feel like using a coil, with the reliability, predictability, low maintenance, and ergonomics of a pen-style rotary.

Neuma's vision, simply put, is to innovate, create, and empower the artists of the tattoo community. Our goal is to anticipate and address the changing needs and desires of artists and to provide them with superior products.



Carson Hill, Neuma Creator

Tattoo artists are continually adapting to modern and advanced technology. While we see that as an important aspect of our growth, we also know the value of what has been achieved by countless masters for more than a hundred years.

It is our intent to bridge the advanced technology of today with the strengths and deeply rooted fundamentals of tattoo history.

Connect

Toll Free (888) 370-0005

info@neumatattoomachines.com

neumatattoomachines

Neuma Tattoo

www.neumatattoomachines.com

